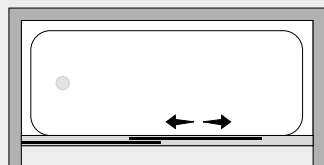


Sopravasca Porta scorrevole (nicchia)



SVQS



Caratteristiche prodotto

- SOPRAVASCA QUADRO
- SERIE FRAME (CON TELAIO)
- PORTA SCORREVOLE CON MECCANISMO DI SGANCIO



- LARGHEZZA 150 > 200 cm.
- ALTEZZA DI SERIE 150 cm. (MAX 160 cm.)



- ESTENSIBILITA' 25+25 mm.



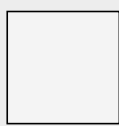
- SPESSORE VETRO 6 mm.



Finiture Profili



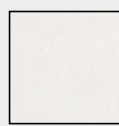
EXTRABRILL



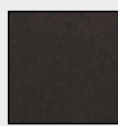
BIANCO
LUCIDO



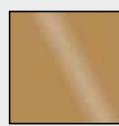
EFF. INOX
SPAZZOLATO



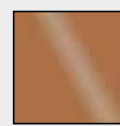
BIANCO
MATERICO



NERO
MATERICO



ORO



RAME

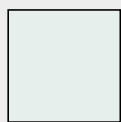


TITANIO



BIANCO
PERLATO

Finiture Vetri



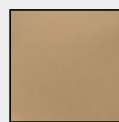
TRASPARENTE



CINCILLÀ



SATINATO



BRONZO



FUMÈ



EXTRACHIARO

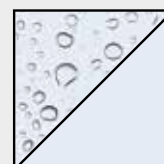
Lavorazioni speciali



SERIGRAFIA 1



SERIGRAFIA 2



SGG TIMELESS®