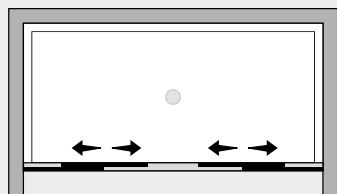


Space *Porta due scorrevoli (in nicchia)*



SC2SNI



Caratteristiche prodotto

- CABINA DOCCIA MODELLO SPACE
- SERIE FRAME (CON TELAIO)
- PORTA SCORREVOLE CON MECCANISMO DI SGANCIO
- CHIUSURA MAGNETICA CON PROFILO ALLUMINIO



- LARGHEZZA 120 > 200 cm.
- ALTEZZA DI SERIE 205 cm. (MAX 220 cm.)



- ESTENSIBILITA' 40 mm.



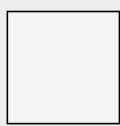
- SPESSORE VETRO 8 mm.



Finiture Profili



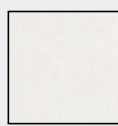
EXTRABRILL



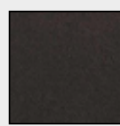
BIANCO LUCIDO



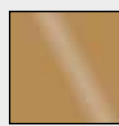
EFF. INOX SPAZZOLATO



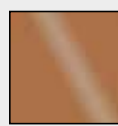
BIANCO MATERICO



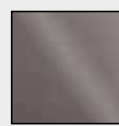
NERO MATERICO



ORO



RAME



TITANIO

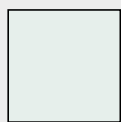


BIANCO PERLATO



MAZZETTA IDEAGROUP

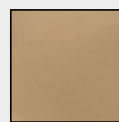
Finiture Vetri



TRASPARENTE



SATINATO



BRONZO



FUMÈ



EXTRACHIARO

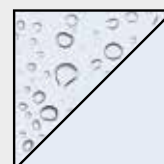
Lavorazioni speciali



SERIGRAFIA 1



SERIGRAFIA 2



SGG TIMELESS®