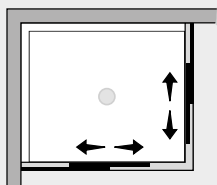


Space *Porta doppio scorrevole (ad angolo)*



Caratteristiche prodotto

SC1Sx2



- CABINA DOCCIA MODELLO SPACE
- SERIE FRAME (CON TELAIO)
- PORTA SCORREVOLE CON MECCANISMO DI SGANCIO
- CHIUSURA MAGNETICA CON PROFILO ALLUMINIO



- LARGHEZZA 67 > 140 cm.
- PROFONDITA' 67 > 140 cm.
- ALTEZZA DI SERIE 205 cm. (MAX 220 cm.)



- ESTENSIBILITA' 20 mm.



- SPESSORE VETRO 8 mm.



Finiture Profili



EXTRABRILL



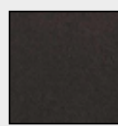
BIANCO
LUCIDO



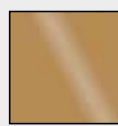
EFF. INOX
SPAZZOLATO



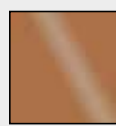
BIANCO
MATERICO



NERO
MATERICO



ORO



RAME



TITANIO

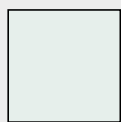


BIANCO
PERLATO



MAZZETTA
IDEAGROUP

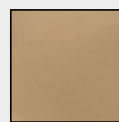
Finiture Vetri



TRASPARENTE



SATINATO



BRONZO



FUMÈ



EXTRACHIARO

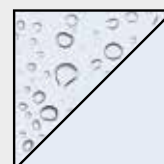
Lavorazioni speciali



SERIGRAFIA 1



SERIGRAFIA 2



SGG TIMELESS®