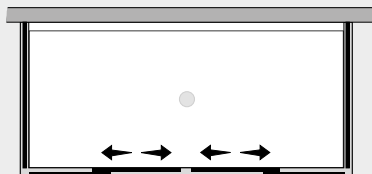


# Quadro

*P. doppio scorrevole c/2 lati fissi (comp. ad angolo)*



QS2P+QUFIx2



## Caratteristiche prodotto

- CABINA DOCCIA MODELLO QUADRO
- SERIE FRAME (CON TELAIO)
- PORTA DOPPIO SCORREVOLE CON MECCANISMO DI SGANCIO
- CHIUSURA MAGNETICA CON GUARNIZIONE IN SILICONE TRASPARENTE



- LARGHEZZA 130 > 180 cm.
- PROFONDITA' 20 > 160 cm.
- ALTEZZA DI SERIE 198 cm. (MAX 198 cm.)



- ESTENSIBILITA' 25+25 mm. (largh.) 25 mm. (prof.)



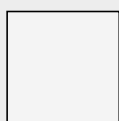
- SPESSORE VETRO 6 mm.



## *Finiture Profili*



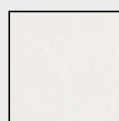
EXTRABRILL



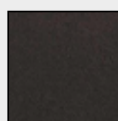
BIANCO  
LUCIDO



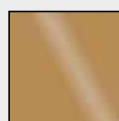
EFF. INOX  
SPAZZOLATO



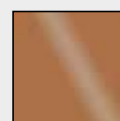
BIANCO  
MATERICO



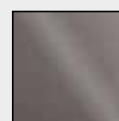
NERO  
MATERICO



ORO



RAME

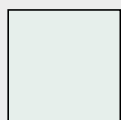


TITANIO



BIANCO  
PERLATO

## *Finiture Vetri*



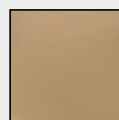
TRASPARENTE



CINCILLÀ



SATINATO



BRONZO



FUMÈ



EXTRACHIARO

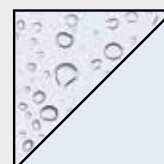
## *Lavorazioni speciali*



SERIGRAFIA 1



SERIGRAFIA 2



SGG TIMELESS®