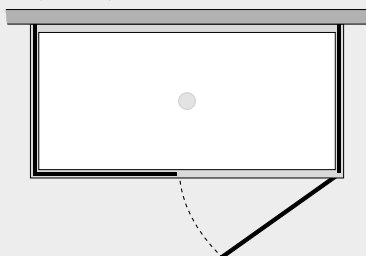


Quadro

P. batt. su fisso c/2 lati fissi (comp. ad angolo)



QBPF+QUFIx2



Caratteristiche prodotto

- CABINA DOCCIA MODELLO QUADRO
- SERIE FRAME (CON TELAIO)
- PORTA CON APERTURA SOLO ESTERNA A BILICO
- CHIUSURA MAGNETICA CON GUARNIZIONE IN SILICONE TRASPARENTE



- LARGHEZZA 90 > 160 cm.
- PROFONDITA' 20 > 160 cm.
- ALTEZZA DI SERIE 198 cm. (MAX 198 cm.)



- ESTENSIBILITA' 25+25 mm. (largh.) 25 mm. (prof.)



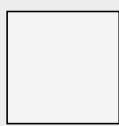
- SPESSORE VETRO 6 mm.



Finiture Profili



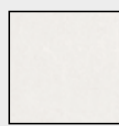
EXTRABRILL



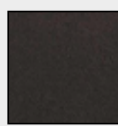
BIANCO
LUCIDO



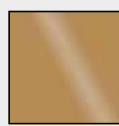
EFF. INOX
SPAZZOLATO



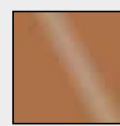
BIANCO
MATERICO



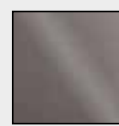
NERO
MATERICO



ORO



RAME

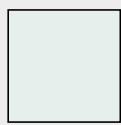


TITANIO



BIANCO
PERLATO

Finiture Vetri



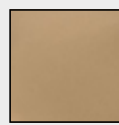
TRASPARENTE



CINCILLÀ



SATINATO



BRONZO



FUMÈ



EXTRACHIARO

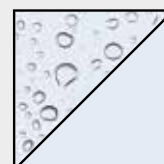
Lavorazioni speciali



SERIGRAFIA 1



SERIGRAFIA 2



SGG TIMELESS®