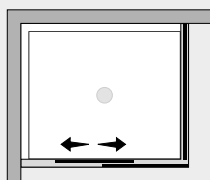


# *Focus* P. scorrevole su parete c/lato fisso (comp. ad angolo)



FCPM+FCFX



## *Caratteristiche prodotto*

- CABINA DOCCIA MODELLO FOCUS
- SERIE FRAME (CON TELAIO)
- PORTA SCORREVOLE CON MECCANISMO DI SGANCIO E SISTEMA SOFT-CLOSE
- CHIUSURA MAGNETICA CON PROFILO ALLUMINIO



- LARGHEZZA 97 > 180 cm.
- PROFONDITA' 27 > 120 cm.
- ALTEZZA DI SERIE 198 cm. (MAX 198 cm.)



- ESTENSIBILITA' 20 mm.



- SPESSORE VETRO 6 mm.



## *Finiture Profili*



EXTRABRILL



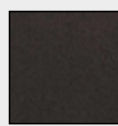
BIANCO  
LUCIDO



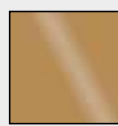
EFF. INOX  
SPAZZOLATO



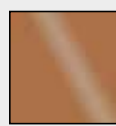
BIANCO  
MATERICO



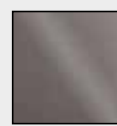
NERO  
MATERICO



ORO



RAME



TITANIO

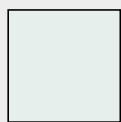


BIANCO  
PERLATO



MAZZETTA  
IDEAGROUP

## *Finiture Vetri*



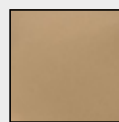
TRASPARENTE



CINCILLÀ



SATINATO



BRONZO



FUMÈ



EXTRACHIARO

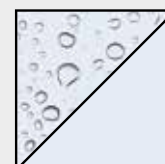
## *Lavorazioni speciali*



SERIGRAFIA 1



SERIGRAFIA 2



SGG TIMELESS®