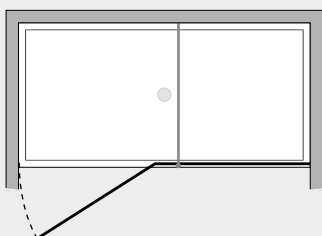


# *Clip* Porta battente (in nicchia)



CNNI



## *Caratteristiche prodotto*

- CABINA DOCCIA MODELLO CLIP
- SERIE MINIMAL (SENZA TELAIO)
- PORTA CON APERTURA SOLO ESTERNA CON CERNIERE VETRO-VETRO
- CHIUSURA MAGNETICA CON PROFILO ALLUMINIO



- LARGHEZZA 80 > 200 cm.
- ALTEZZA DI SERIE 198 cm. (MAX 220 cm.)



- ESTENSIBILITA' 15 mm.



- SPESSORE VETRO 8 mm.



## *Finiture Profili*



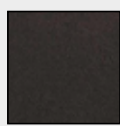
EXTRABRILL



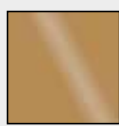
EFF. INOX  
SPAZZOLATO



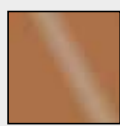
BIANCO  
MATERICO



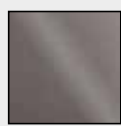
NERO  
MATERICO



ORO



RAME



TITANIO

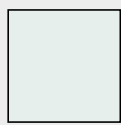


BIANCO  
PERLATO



MAZZETTA  
IDEAGROUP

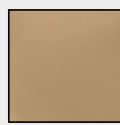
## *Finiture Vetri*



TRASPARENTE



SATINATO



BRONZO



FUMÈ



EXTRACHIARO

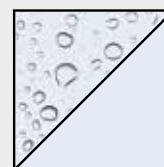
## *Lavorazioni speciali*



SERIGRAFIA 1



SERIGRAFIA 2



SGG TIMELESS®